

29th year providing seedstock red angus



Lot 1

This sale will be broadcast live on the internet.

DVAuction

Broadcasting Real-Time Auctions

Real time bidding & proxy bidding available.



Lot 8



Lot 24

DAHLKE RED ANGUS

•Breeding Soundness Exam •Carcass Ultrasounded •Performance Tested

Sunday, March 28TH, 2021
2PM

At the Farm • Bagley, MN



Top Dollar Angus
Seedstock Producer



All bulls are DNA parent verified
with 50K genomic enhanced EPD's



DAHLKE RED ANGUS

ANNUAL PRODUCTION SALE

SUNDAY, MARCH 28TH, 2021

2PM CST • AT THE FARM

Auctioneer

• Mitch Barthel
Tri-County Livestock
218-639-5228

Sale Day Phones

• Bryantt...218-533-0259
• Arlan.....218-556-5896
• Mike.....218-556-1891
• Ellen.....218-533-0145

Ringmen

• Ty Bayer...715-573-0153
The Stockman
• Wanda Gilbertson...
Special Assignment

Sale Location

19505 400th street, Bagley, MN 56621
The sale will be held at the Dahlke Farm 5 miles north of Bagley, MN., 90 miles east of Grand Forks, ND, 180 miles west of Duluth, MN.

Directions to Sale

From Bagley head 4 miles north on Hwy 92, then go east 2.5 miles on county road 1. Farm is located on the south side of the road.

Lodging

Lodging is available within 25 miles in Fosston, Clearbrook & Bemidji.
LePier Lodge - Fosston 218-435-1088
Pipers Inn - Clearbrook 218-776-2323
Numerous hotels located in Bemidji.

Delivery

Free delivery in Minnesota & surrounding states. Beyond that we will assist in any way necessary to get the bull to your farm. Delivery will begin the week following the sale unless other arrangements are made.

Feeding & Boarding

Bulls are kept free of charge until April 15th. After that there will be a \$4/day charge for feed/board.

Performance Data

Carcass ultrasound data, scrotal circumference & frame scores will be available on sale day. ADG was taken on a 90 day test.

Genetic Information

All bulls in the sale have had a 50K genomic test, & the EPD's listed reflect that. The test verifies parentage and increases the predictability of economically important traits.

Health

At birth the bulls received Ultrabac 8, Inforce 3, MultiMin & Tri-shield. In the spring they received Ultrabac 8. Pre-weaning they received Vista-Once & Ultrabac 8 and poured with Clean Up 2. At weaning they received InForce3, and Once PMH IN. In November they received Valbazen and were poured with Clean Up 2.

The females were vaccinated with Ultrabac 8, Virashield 6L5 and Longe Range at the end of April 2020. They were ultrasounded for pregnancy on 8-13-20. In the fall they were vaccinated with UltraBac 8, Valbazen, Scour-Boss 9 and poured with Clean Up 2. They were bangs vaccinated last year as calves.

Guarantee

All bulls are sold as guaranteed breeders. In the event a bull has fertility issues, a replacement bull or future sale credit will be provided when the defective bull is returned to us in a good state of health. All bulls will have passed a breeding soundness exam prior to delivery.

Insurance

We strongly encourage all buyers to insure their purchases. Mortality insurance can be purchased through Lindfors Insurance Agency. 218-435-6585.

Semen Interest

Dahlke Red Angus will retain 1/3 semen interest on all bulls for in herd use only unless otherwise stated on the auction block. 100% revenue sharing interest is being sold on all bulls.

Transfer of Registration Papers

All cattle sold on sale day will be transferred to their new owner through the breed association.

Risk

Anybody attending the sale does so at their own risk. Dahlke Red Angus will not be held responsible for any injuries or illnesses incurred from attending this sale.

Lunch

Complimentary lunch will be served starting at 12:30.

Online Bidding & Viewing

Videos of the cattle will be available to view on DVAuction.com and dahlkeredangus.com. The sale will be broadcast live online with DVAuction. If you plan on bidding online, we strongly encourage you to call in the days leading up to the sale to talk about what bulls are best suited to fit your goals.

Sale Order/Supplement Sheet

Sale order & Supplement sheet will be available on sale day. Any corrections to the catalog will be either printed on the supplement sheet or announced on the auction block. Announcements made sale day take precedent over any printed material in the catalog or otherwise.

EPD's

Catalog EPD's are current as of 2-27-2021. An updated EPD list will be available on sale day.

Sale Format

Cattle will sell inside our newly constructed sale barn. Cattle will be on display outside in large pens for your appraisal. Tv's will be set-up inside playing pre-recorded videos of each lot during the sale.

Calving Ease

1 Star calving ease ... Recommended for cows
2 Star calving ease ... Recommended for growthy, well developed heifers & cows
3 star calving ease ... Recommended for heifers

Please Remember to bring your catalog on sale day!

DVAuction
Broadcasting Real-Time Auctions

Visit www.DVAuction.com
and Register Today!

For General Questions Please Contact Our Office:
(402) 316-5460 or support@dvauction.com

Welcome Cattlemen!

We would like to invite you to our first annual production sale at the farm & encourage you to come check out the sale cattle and the cow herd behind them. Talking about cattle and genetics is something we enjoy and feel we can best fill your needs if we work together by discussing your goals and direction with certain lots or sire groups. We have enjoyed working with our private treaty customers in this manner and look forward to continuing that relationship in a sale day auction format.

Our family roots run deep in this area as my great-great-grandfather (John Baumann) homesteaded a couple miles north of here in 1898. The current Dahlke farm was purchased 73 years ago by my great grandfather Carl Dahkle, where he raised a commercial herd of hereford cows until my grandfather, Arlan, purchased the farm. In the early 1970's, he transitioned into a purebred herd of Red Poll cows and began selling seedstock bulls and females. The red poll cows were good maternal cattle but lacked the ability to grade choice consistently, which is what led Arlan to the Red Angus breed in the late 1980s. Since 1992, Dahlke Red Angus has been focused solely on the Red Angus breed. From 1998 to 2008 we sold our bulls in conjunction with the Nordlund family at their farm and have since sold our bulls via private treaty off of our own farm until now. In 2009 Arlan gave me the opportunity to purchase the farm & the cowherd is currently owned by Arlan, my mother and stepfather, Mike and Sandy Girtz, and myself. 2021 marks a new chapter in our story as we have been planning for the sale and Ellen & I are also planning an August wedding. 2021 is a year we are very excited about!

AI has been utilized since the very beginning with some of these cows going back double digit generations to top AI stud bulls. We continue to move our herd forward with embryo transfer, to give our customers more opportunity to use our top genetics. 15 of the 23 bulls on the sale are either a product of embryo transfer themselves or have a parent that is. We are committed to using the very best genetics that fit our environment & take our breeding decisions seriously as we know that it directly impacts our customers bottom line.

We like our cows wedge shaped & moderate and feel that a 5.5 to 6 frame cow is the ideal size for our environment. Our cowherd is culled extremely hard for fertility, maintaining a calving window that extends only 45 days past our synchronize AI date. Any cow that shows undesirable feet is moved to the recipient group. The cows must maintain flesh throughout the year, display a friendly disposition & set down and maintain a beautiful udder that the angus breed is known for. Failure to do any of these things leads to the cull or recipient pen.

The group of bulls on the sale are complete from top to bottom & a group that we are very proud of. They combine the maternal traits that we expect from our cattle but also combine the carcass qualities that the rest of the supply chain demands.

Over half of the offering qualifies for Top Dollar Angus™, a program designed for commercial producers to earn a premium price & increased demand for their feeder calves derived from premium carcass genetics. As always, we are offering to buy 1 bag of FCCP tags per bull purchased to be used to capture added value for your feeder calves through age, source & genetic verification.

The cattle will be on display Sunday, March 28th, and you will be able to bid in person, on the phone or online at DVAuction.com. We look forward to a continued friendship with current and future customers.

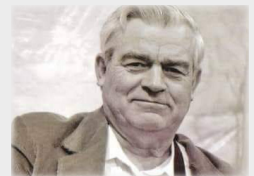
Bryantt Bolduc



Bryantt, Ellen & Faith



Mike & Sandy Girtz



Arlan Dahlke

Reference Sires



5L Bourne 117-48A Sire of Lots 1,3,28



Bieber Spartan E639 Sire of lots 13,14



5L Capitalist 525-225F Sire of lots 2,4



Andras Fusion R236 Sire of lots 16-18



Collier Finished Product Sire of lots 5-7



S A V Elation 7899 Sire of lot 8



Bieber CL Stockmarket E119 Sire of lots 11,12



LD Capitalist 316 Sire of lots 9,10

Lot
1



Dahlke Rockefeller 009H



CED	BW	WW	YW	Milk	HPG	CEM	Stay	Marb	CW	REA	ProS	HB	GM
13	-4.0	77	124	31	18	7	14	.82	43	.14	175	91	84
37%	13%	4%	5%	8%	1%	58%	71%	1%	2%	39%	1%	21%	1%

BW: 76 WW: 720 YW: 1373 ADG Ratio: 120
 Dam's Nursing Ratio: 1/103 Dam's Age: 2
 3 Star Calving Ease

Reg. #4261367
 009H/BOLD
 02-23-2020

5L ADVANTAGE 3267 -221Y
 SIRE: 5L BOURNE 117-48A
 5L ROXIE 854-117

BIEBER CL ATOMIC C218
 DAM: DAHLKE MS HILTON 13F ET
 DAHLKE MS HILTON 263C



Granddam of Lot 1

- Introducing Rockefeller 009H, a dark red, friendly, easy fleshing bull with a ton of rear quarter in a moderate frame
- His feet and legs may be his most impressive attributes. He owns a jet black hoof that is shaped absolutely perfect along with smooth flexible joints allowing him to move freely
- We believe Rockefeller to be a heifer safe, calving ease bull, with a 76 pound birthweight, the right calving ease EPD's, and a small angus head
- A true curve bender with top 13% BW, top 4% WW & 5% YW
- Ranks top 1% for the new ProS Index, 1% Heifer Pregnancy, 1% Marbling, & 1% Gridmaster, combining both maternal and carcass quality
- His 2 year old, Atomic sired, dam did a great job on her first try & is part of one of the best flushes we've ever had. Flush sister also is the dam of lot 2
- Granddam (pictured left) and great granddam (200Y) are both flush cows for us
- Keep all the females and Rockefeller 009H is sure to make you profitable
- AI sired by the Wide Bodied bull, 5L Bourne 117-48A
- Top dollar angus certified



CED	BW	WW	YW	Milk	HPG	CEM	Stay	Marb	CW	REA	ProS	HB	GM
14	-1.3	78	126	28	20	8	12	.54	45	.37	160	92	68
30%	58%	3%	3%	21%	1%	26%	84%	20%	1%	7%	3%	19%	6%

BW: 87 WW: 816 YW: 1423 ADG Ratio: 124
 Dam's Nursing Ratio: 1/117 Dam's Age: 2
 2 Star Calving Ease

Reg. #4261387
 035H/BOLD
 03-18-2020

LD CAPITALIST 316
 SIRE: 5L CAPITALIST 525-225F
 5L ADINA 853-525

BIEBER CL ATOMIC C218
 DAM: DAHLKE MS HILTON 10F ET
 DAHLKE MS HILTON 263C



LD Capitalist 316, Grandsire of Lot 2

- Headlining the first calf crop of 5L Capitalist is Uffda 035H, a red grandson of the great angus sire, LD Capitalist 316
- 5L Capitalist 225F is an ET son of 5L Adina 853-525 that herself scanned 8.66% IMF & a 13.2 inch ribeye as a 835 pound yearling heifer
- The heaviest weaning weight bull of 2020 at 816 pounds
- You can't make them any wider across the top than this guy, a bull you must see in person to truly appreciate his overall width. He will make you say "Uffda!"
- The true definition of moderate. A 5 frame bull that weighs more than most other bulls with his frame size
- Uffda 035H is out of an elegant made, perfect uddered, 2 year old cow that is a flush sister to the dam of Lot 1. We couldn't have asked for a better "job well done" from these flush sisters on their first try
- Above average calving ease along with top-tier growth and carcass. WW, YW, Marb, CW, Ribeye all ranking in the top 20% of the breed
- Top 3% for the new profit index, ProS
- Elite Top 1% Heifer pregnancy, keep all the females!
- Top dollar angus certified

Lot

3



Dahlke Bourne 004H ET



SIRE: 5L ADVANTAGE 3267-221Y
5L BOURNE 117-48A
5L ROXIE 854-117

DAM: DAHLKE DR. LOVE 143W
DAHLKE LOVEBIRD 200Y
DAHLKE ROSIE 11N

- An ET 5L Bourne son out of the 200Y Donor. Twin to a bull
- We have some more flushmates this year that we are really excited about
- 200Y is a cow that excels in foot quality and may have the biggest, correct made, foot I've seen on a red angus cow
- 004H's dam is a 10 year old cow and the dam of 5L Bourne is 14. Longevity is bred in on this guy
- Top 1% Heifer Pregnancy!
- We are calving out our first Bourne sired cows and they look like they are going to be the real deal
- Maternal brother to the 263C donor and lots 9,10,16,17

CED	BW	WW	YW	Milk	HPG	CEM	Stay	Marb	CW	REA	ProS	HB	GM
11	-1.8	63	94	32	19	6	17	.45	19	-.06	121	94	27
73%	48%	38%	52%	4%	1%	73%	31%	37%	51%	58%	42%	17%	76%

BW: 52 WW: 546 YW: 1048 ADG Ratio: 94
Dam's Nursing Ratio: 8/106 Dam's Age: 10
3 Star Calving Ease

Reg. #4261391
004H/BOLD
02-18-2020

Lot

4



Dahlke Capitalist 036H



SIRE: LD CAPITALIST 316
5L CAPITALIST 525-225F
5L ADINA 853-525

DAM: BIEBER SPARTACUS A193
BIEBER LASS 117D
BIEBER LASS 294B

- Here's a super easy going son of 5L Capitalist out of Bieber Lass 117D, a Spartacus sired cow we purchased as the high selling bred heifer on the Bieber red angus female sale a few years ago
- Heifer safe with a Calving Ease Direct of 18 putting him in the top 3% of the breed
- A bull that will keep his flesh during hard times
- Top 9% Heifer pregnancy, 7% Calving ease maternal
- Easy calving, easy fleshing, easy going!

CED	BW	WW	YW	Milk	HPG	CEM	Stay	Marb	CW	REA	ProS	HB	GM
18	-2.3	68	107	26	14	10	10	.46	16	-.10	106	72	34
3%	39%	19%	24%	43%	9%	7%	95%	35%	66%	48%	68%	65%	61%

MARCH 28 • 2PM

BW: 81 WW: 615 YW: 1155 ADG Ratio: 93
Dam's Nursing Ratio: 3/106 Dam's Age: 4
3 Star Calving Ease

Reg. #4261351
036H/BOLD
03-20-2020

Dahlke Finished Product 016H



Lot
5



CED	BW	WW	YW	Milk	HPG	CEM	Stay	Marb	CW	REA	ProS	HB	GM
21	-5.8	54	102	27	12	12	18	.43	24	.26	172	109	63
1%	3%	70%	35%	33%	30%	1%	15%	41%	32%	18%	1%	3%	9%

BW: 73 WW: 680 YW: 1315 ADG Ratio: 110
 Dam's Nursing Ratio: 4/101 Dam's Age: 5
 3 Star Calving Ease

Reg. #4229282
 016H/ARD
 02-28-2020

COLLIER FINAL PRODUCT B389
 SIRE: COLLIER FINISHED PRODUCT
 COLLIER AMY B385

ANDRAS FUSION R236
 DAM: DAHLKE MS SANDY 271C
 DAHLKE TRENDY SANDY 127U

- A correct made bull with big time herd bull presence!
- Maternal brother to our Lot 1-4 flush brothers that were well recieved last year
- All of these Finished Product sons are dark red and 016H is no exception
- Long bodied, stout rumped, out of a highly maternal Fusion sired cow
- Top 1% Calving Ease, Calving Ease Maternal, top 3% for herdbuilder, top 9% gridmaster with a top 1% for total profit-sustainability
- A favorite of many visitors this summer/fall that your eyes are easily drawn to
- Sleep all night heifer safe!
- Top dollar angus certified



Collier Finished Product - Sire of Lots 5,6,7

Lot



Dahlke Team Captain 070H

6

SIRE: COLLIER FINAL PRODUCT B389
COLLIER FINISHED PRODUCT
COLLIER AMY B385

DAM: DAHLKE BOXCAR WILLIE 8538
DAHLKE GDRA MISTY 18B
SUNRISE MISTY

- A dark red son of the ABS top selling stud, Collier Finished Product
- Moderate made, easy fleshing bull with a good disposition out of a solid 6 year old cow
- Excellent Spread with a low birth weight of 75 pounds with a 691 pound weaning weight
- A set of EPD's that are hard to match.
- Top 1% Calving ease direct, ProS, & Herd-builder
- Calving ease, Maternal, Carcass, and Total Profit, Team Captain 70H covers all the bases
- We really like these Finished Product bulls and plan to keep using him to add fleshing ability and overall profitability
- Top dollar angus certified



CE	BW	WW	YW	Milk	HPG	CEM	Stay	Marb	CW	REA	ProS	HB	GM
19	-5.0	52	83	25	15	11	21	.47	25	.12	181	132	49
1%	6%	78%	75%	52%	5%	2%	2%	33%	29%	43%	1%	1%	28%

BW: 75 WW: 691 YW: 1224 ADG Ratio: 105
Dam's Nursing Ratio: 5/96 Dam's Age: 6
3 Star Calving Ease

Reg. #4280609
70H/GDRA
02-28-2020

Lot



Dahlke Valedictorian 069H

7

SIRE: COLLIER FINAL PRODUCT B389
COLLIER FINISHED PRODUCT
COLLIER AMY B385

DAM: 3SCC HEIDI C64
ANDRAS FUSION R236
3SCC HEIDI A82

- Another dark red, easy fleshing, Finished Product son
- 69H is a wide bodied, loose hided bull that is hard to fault
- 3/4 brother to Lot 5. Finished Product X Fusion
- Dam is from the Heidi family that has done so many good things for the breed
- Top 3% Heifer Pregnancy, 17% ProS, 17% Herdbuilder!
- These Finished Product sons will be well recieved on sale day



CE	BW	WW	YW	Milk	HPG	CEM	Stay	Marb	CW	REA	ProS	HB	GM
15	-4.1	47	76	24	16	9	16	.49	21	-.02	138	93	45
16%	12%	87%	85%	65%	3%	10%	43%	30%	46%	67%	17%	17%	35%

MARCH 28 • 2PM

BW: 83 WW: 684 YW: 1234 ADG Ratio: 96
Dam's Nursing Ratio: 4/102 Dam's Age: 5
3 Star Calving Ease

Reg. #4280611
69H/GDRA
02-27-2020

Dahlke Elation 002H



Lot
8



CED	BW	WW	YW	Milk	HPG	CEM	Stay	Marb	CW	REA	ProS	HB	GM
11	-2.5	62	91	23	15	6	17	.20	33	.15	124	97	27
73%	35%	42%	60%	70%	8%	78%	23%	94%	10%	38%	36%	12%	75%

BW: 83 WW: 704 YW: 1274 ADG Ratio: 86
 Dam's Nursing Ratio: 11/103 Dam's Age: 12
 2 Star Calving Ease

Reg. #4229276
 002H/ARD
 02-08-2020

SINCLAIR EMULATION XXP

SIRE: S A V ELATION 7899

S A V BLACKCAP MAY 1782

OHRR DAKOTA COPPER 29K

DAM: DAHLKE DAKOTA SARA 120U

DAHLKE MAJOR SARA 75S

- Longevity based genetics here, out of a solid cow that turned 13 years old this spring that has settled AI every year
- Some of her first sons we sold were still being used to breed cows at 8 & 9 years of age
- 002H is sired by the S A V Elation bull who, at the time, sold for a world record setting \$800,000 at Schaff's
- Elation 002H is an extremely long bodied bull with a striking herd bull presence
- A free moving bull with a well designed foot that is built to last
- As of February 1st, 002H was the heaviest bull to come across the scale
- Black-red gene carrier
- A black-red gene carrier bred to Homozygous black cows the calves will always be black, bred to heterozygous black cows -75% will be black and 25% red, bred to red cows and they will be 50% black, 50% red



S A V Elation - Sold for \$800,000

Lot

9



Dahlke Capitalist 015H ET

SIRE: CONNEALY CAPITALIST 028
LD CAPITALIST 316
LD DIXIE ERICA 2053

DAM: DAHLKE DR.LOVE 143W
DAHLKE MS LOVEBIRD 200Y
DAHLKE ROSIE 11N



Sire of Lots 9,10 →



- These two full brothers are packed full of red meat, sired by the popular angus sire, LD Capitalist 316
- Heavy muscled, long bodied with big correct made feet
- These two bulls are sure to sire some heavy calves
- Top 2% for WW, YW, 1% Carcass Weight, Gridmaster, & Profit-Sustainability (ProS).
- Black-red gene carrier
- This bull is black
- Top dollar angus certified

CED	BW	WW	YW	Milk	HPG	CEM	Stay	Marb	CW	REA	ProS	HB	GM
12	1.4	80	132	28	15	9	15	.49	63	.38	184	99	85
59%	95%	2%	2%	25%	8%	10%	49%	30%	1%	7%	1%	10%	1%

BW: 86 WW: 672 YW: 1207 ADG Ratio: 116
Dam's Nursing Ratio: 8/106 Dam's Age: 9
2 Star Calving Ease

Reg. #4280563
015H/BOLD
02-27-2020

Lot

10



Dahlke Cap 316 019H

SIRE: CONNEALY CAPITALIST 028
LD CAPITALIST 316
LD DIXIE ERICA 2053

DAM: DAHLKE DR.LOVE 143W
DAHLKE MS LOVEBIRD 200Y
DAHLKE ROSIE 11N

- If you're looking to add pounds to your calf crop, buy both of these brothers
- Flushmate sister is a standout in the replacement pen
- Black red carrier
- Bull does have some white on his under belly in front of his navel
- Top dollar angus certified



CED	BW	WW	YW	Milk	HPG	CEM	Stay	Marb	CW	REA	ProS	HB	GM
12	-0.2	74	120	28	14	9	14	.41	51	.38	155	89	67
58%	79%	7%	8%	25%	10%	9%	66%	46%	1%	7%	5%	25%	7%

MARCH 28 • 2PM

BW: 88 WW: 693 YW: 1313 ADG Ratio: 104
Dam's Nursing Ratio: 8/106 Dam's Age: 9
2 Star Calving Ease

Reg. #4261329
019H/BOLD
02-29-2020

Dahlke Homerun 067H



Lot
11



PIE STOCKMAN 4051
SIRE: BIEBER CL STOCKMARKET E119
BIEBER CL ADELLE 475C

3SCC GREVIOUS B32
DAM: DAHLKE GDRA MISTY 35D
SUNRISE MISTY

- Sired by Bieber CL Stockmarket E119, a bull that you are going to be hearing a lot about in the coming years
- Outcross bloodlines to many popular red angus lines
- 67H is an easy fleshing bull with loads of muscle and correct made feet and legs.
- Dam goes back to the popular angus sire, HF Kodiak 5R

CED	BW	WW	YW	Milk	HPG	CEM	Stay	Marb	CW	REA	ProS	HB	GM
16	-3.4	61	96	28	14	11	15	.72	12	.18	140	91	49
8%	21%	45%	48%	25%	12%	3%	52%	3%	78%	31%	15%	21%	27%

BW: 75 WW: 663 YW: 1287 ADG Ratio: 107
Dam's Nursing Ratio: 3/99 Dam's Age: 4
3 Star Calving Ease

Reg. #4280613
67H/GDRA
02-25-2020

Dahlke Major Shareholder 068H



Lot
12



PIE STOCKMAN 4051
SIRE: BIEBER CL STOCKMARKET E119
BIEBER CL ADELLE 475C

JACOBSON BASIN 1173
DAM: DAHLKE GDRA HANNAH 13A
DAHLKE HANNAH MISSION 04Y

← Sire of lots 11,12

- A Stockmarket sired bull out of a good 7 year old cow that has earned her keep
- Hannah cow family has been here since the beginning with the original Hannah cow producing to over 20 years old!
- Top 5% of the breed for Stayability (Longevity)

CED	BW	WW	YW	Milk	HPG	CEM	Stay	Marb	CW	REA	ProS	HB	GM
13	-4.6	47	71	29	11	9	20	.54	3	.11	114	92	21
43%	8%	88%	89%	19%	45%	17%	5%	20%	96%	46%	55%	19%	85%

MARCH 28 • 2PM

BW: 78 WW: 683 YW: 1117 ADG Ratio: 74
Dam's Nursing Ratio: 6/100 Dam's Age: 7
3 Star Calving Ease

Reg. #4280607
68H/GDRA
02-27-2020

Lot

13



Dahlke Sparta 021H



CED	BW	WW	YW	Milk	HPG	CEM	Stay	Marb	CW	REA	ProS	HB	GM
11	-0.9	69	110	27	13	7	15	.36	21	-.05	122	90	32
69%	66%	18%	20%	27%	17%	47%	49%	60%	43%	82%	39%	23%	65%

BW: 84 WW: 676 YW: 1260 ADG Ratio: 102
 Dam's Nursing Ratio: 5/103 Dam's Age: 6
 2 Star Calving Ease

Reg. #4261343
 021H/BOLD
 03-02-2020

BIEBER SPARTACUS A193
 SIRE: BIEBER SPARTAN E639
 BIEBER RENEE 477A

BECKTON EPIC R397 K
 DAM: DAHLKE MS BIRDIE 232B
 DAHLKE MS BIRDIE 194Y

- Here is a bull sired by the new ABS stud, Bieber Spartan E639.
- A low center of gravity bull with tons of capacity and a quiet demeanor.
- Dam is a super moderate framed, Beckton bred cow that consistently weans off over 65% of her bodyweight
- A maternal brother, Dahlke Endeavor 9D, was a Lot 1 favorite a few years back
- This is a bull that will add payweight but still keep your mature cow weights in check



<— Sire of Lot 13,14

Dahlke Spartan 022H

GGP50K

Lot

14



SIRE: BIEBER SPARTACUS A193
 BIEBER SPARTAN E639
 BIEBER RENEE 477A
 RED SIX MILE SAKIC 832S
 DAM: DAHLKE MS BIRDIE 162X
 DAHLKE MAKE MY BIRDIE 93T

- These Spartan calves have loads of growth and style to boot
- Dam is a solid 10 year old cow with a 106 MPPA
- Maternal brother to Dahlke Good Ol Boy 40E, a bull we sold a couple years ago that weaned off over 900 pounds with no creep
- Top 12% WW, 18% YW while being -1.0 on BW
- Ratioed 111 average daily gain on test
- Maternal sister sells as lot 25

CED	BW	WW	YW	Milk	HPG	CEM	Stay	Marb	CW	REA	ProS	HB	GM
8	-1.0	71	111	28	7	6	15	.17	24	-.16	71	57	13
94%	65%	12%	18%	25%	97%	69%	62%	96%	33%	95%	98%	88%	94%

BW: 92 WW: 632 YW: 1180 ADG Ratio: 111
 Dam's Nursing Ratio: 9/106 Dam's Age: 10
 2 Star Calving Ease

Reg. #4261327
 022H/BOLD
 03-02-2020

Dahlke Marble Bar 031H

GGP50K

Lot

15



SIRE: MILWILLAH MARBLE BAR J53
 DAHLKE MARBLE BAR 6F
 DAHLKE ROSIE 27D
 RED CROWFOOT MOONSHINE 8081U
 DAM: DAHLKE MS FAITH 2D
 DAHLKE MAJOR SARA 75S

- Outcross genetics here, combining Marble Bar, Moonshine & Kodiak in the first couple of generations
- Dam is a front pasture kind of cow with an impeccable phenotype
- Expect solid udders and longevity from this bull with the Sara cow family behind him

CED	BW	WW	YW	Milk	HPG	CEM	Stay	Marb	CW	REA	ProS	HB	GM
9	-1.4	65	95	28	13	5	15	.26	27	.00	103	82	21
92%	57%	29%	51%	25%	20%	84%	54%	84%	23%	72%	73%	42%	85%

← Milwillah Marble Bar
 Grandsire of Lot 15

MARCH 28 • 2PM

BW: 83 WW: 669 YW: 1168 ADG Ratio: 88
 Dam's Nursing Ratio: 3/98 Dam's Age: 4
 2 Star Calving Ease

Reg. #4261353
 031H/BOLD
 03-17-2020

Lot



Dahlke Integrity 007H ET

16

Reg. #4261389
007H/BOLD
02-22-2020

SIRE: ANDRAS IN FOCUS B175
ANDRAS FUSION R236
ANDRAS BELLE B167

DAM: DAHLKE DR. LOVE 143W
DAHLKE MS LOVEBIRD 200Y
DAHLKE ROSIE 11N

- What an awesome set of flush brothers!
- Sired by the time tested, calving ease staple, Andras Fusion R236
- 5 sons sell in the sale out of the 200Y cow and every one has a big hip and solid feet
- 007H has been a standout since birth and may be the longest bodied Fusion sired bull I've seen
- Cocky hipped, perfect feet & loose hided
- 013H is a deeper bodied, soggy made bull that I like more and more every day
- Turn these two brothers in with a group of heifers as we have never pulled a calf from Fusion in 7 years!



BW: 77 WW: 652 YW: 1191 ADG Ratio: 105
Dam's Nursing Ratio: 8/106 Dam's Age: 9
3 Star Calving Ease

CED	BW	WW	YW	Milk	HPG	CEM	Stay	Marb	CW	REA	ProS	HB	GM
13	-0.8	57	102	30	11	10	17	.51	20	-.01	145	89	56
35%	69%	61%	35%	12%	45%	5%	29%	25%	47%	70%	11%	26%	16%



Dahlke Fusion 013H ET

Lot
17

Reg. #4261365
013H/BOLD
02-26-2020

BW: 79 WW: ET YW: 1088 ADG Ratio: 107
Dam's Nursing Ratio: 8/106 Dam's Age: 9
3 Star Calving Ease



CED	BW	WW	YW	Milk	HPG	CEM	Stay	Marb	CW	REA	ProS	HB	GM
11	1.1	62	109	30	12	9	17	.65	33	-.03	165	89	76
72%	93%	39%	21%	12%	28%	18%	32%	7%	10%	65%	2%	25%	3%



Dahlke Fusion 014H

Lot

18

SIRE: ANDRAS IN FOCUS B175
ANDRAS FUSION R236
ANDRAS BELLE B167

DAM: DAHLKE MS BIRDIE 23F
BIEBER DEEP END B597
DAHLKE MS BIRDIE 233B

← Sire of Lots 16-18



- This guy combines the calving ease of Fusion with the power of Deep End
- Raised by a first calf heifer that I'd score a 10/10 for foot and udder quality along with being an absolute beautifully made cow
- Birdie Cow family has been a mainstay around here for good reason
- Sure fire heifer bull
- Top dollar angus certified



CED	BW	WW	YW	Milk	HPG	CEM	Stay	Marb	CW	REA	ProS	HB	GM
14	-3.5	52	93	23	9	10	14	-.68	23	-.06	136	74	62
23%	19%	77%	56%	67%	84%	4%	70%	5%	36%	84%	19%	60%	10%

BW: 74 WW: 611 YW: 1144 ADG Ratio: 97
Dam's Nursing Ratio: 1/97 Dam's Age: 2
3 Star Calving Ease

Reg. #4229286
014H/ARD
02-27-2020

Dahlke Boomer 048H



Lot

19



BIEBER CL ATOMIC C218
SIRE: DAHLKE EXPLOSION 14F ET
DAHLKE MS HILTON 263C

LJC MERLIN 937Z
DAM: DAHLKE ROSIE GIRL 38E
DAHLKE ROSIE 266C

- The first calf crop from Explosion 14F, a flush brother to the dam of lot 1 & 2
- Boomer 048H is dark cherry red, long bodied with a small calving ease head
- -3.2 for birth with a 112 for yearling weight makes this guy a true curve bender
- Dam is a young cow with a snug udder-sired by Merlin 937Z, an AI stud at Genex
- I expect all of these Explosion sired bulls to be highly maternal
- Safe to be used on heifers
- Top dollar angus certified



← Bieber CL Atomic
Grandsire of Lots 19-22

CEB	BW	WW	YW	Milk	HPG	CEM	Stay	Marb	CW	REA	ProS	HB	GM
12	-3.2	67	112	30	12	8	17	.40	29	-.29	145	91	55
52%	24%	21%	16%	9%	40%	32%	29%	49%	17%	14%	10%	22%	18%

BW: 76 WW: 608 YW: 1125 ADG Ratio: 92
Dam's Nursing Ratio: 2/100 Dam's Age: 3
3 Star Calving Ease

Reg. #4238628
048H/ARD
04-13-2020

Dahlke Explosion 032H



Lot

20



BIEBER CL ATOMIC C218
SIRE: DAHLKE EXPLOSION 14F ET
DAHLKE MS HILTON 263C

BASIN HOBO 79E
DAM: DAHLKE MS TJ 237B
TJ X24

- Another dark red son of Explosion 14F out of a perfect uddered Hobo 79E cow
- 032H owns a solid set of EPDS that are balanced across the board
- Top 3% ProS, 8% Herdbuilder, 10% grid-master
- 61 pound birthweight - Heifer Safe
- Top dollar angus certified



CEB	BW	WW	YW	Milk	HPG	CEM	Stay	Marb	CW	REA	ProS	HB	GM
14	-3.1	52	83	29	9	8	20	.71	24	-.15	163	101	62
34%	24%	78%	75%	14%	84%	32%	3%	4%	33%	38%	3%	8%	10%

MARCH 28 • 2PM

BW: 61 WW: 570 YW: 1057 ADG Ratio: 85
Dam's Nursing Ratio: 5/98 Dam's Age: 6
3 Star Calving Ease

Reg. #4341765
032H/BOLD
03-17-2020

Lot



Dahlke Explosion 044H

21

BIEBER CL ATOMIC C218
 SIRE: DAHLKE EXPLOSION 14F ET
 DAHLKE MS HILTON 263C
 DAHLKE BOXCAR WILLIE 8538
 DAM: DAHLKE MS SANDY 254B
 DAHLKE TRENDY SANDI 127U



- This bulls owns the highest stayability (Longevity) score in the entire offering, ranking in the top 1% of the breed
- Expect longevity and high profitability from this guy
- Combines carcass with maternal
- Top 1% ProS, 2% HB, 5% GM
- Top dollar angus certified

CED	BW	WW	YW	Milk	HPG	CEM	Stay	Marb	CW	REA	ProS	HB	GM
11	-1.6	59	95	29	10	7	23	-70	26	-16	180	111	69
73%	53%	54%	50%	18%	63%	38%	1%	4%	25%	35%	1%	2%	5%

BW: 88 WW: 640 YW: 1183 ADG Ratio: 93
 Dam's Nursing Ratio: 5/98 Dam's Age: 6
 2 Star Calving Ease

Reg. #4261339
 044H/BOLD
 03-30-2020

Lot



Dahlke Explosive 041H

22



BIEBER CL ATOMIC C218
 SIRE: DAHLKE EXPLOSION 14F ET
 DAHLKE MS HILTON 263C
 BADLANDS NET WORTH 23U
 DAM: 3SCC HEIDI A104 ET
 SEEGER HEIDI



Seeger Heidi - granddam of lot 22-->

Reg. #4261337
 041H/BOLD
 03-27-2020

- An absolute power and growth bull
- If you're looking to add frame and overall power to your cow herd, this guy will do it
- Out of a 7 year old ET daughter of the great Seeger Heidi cow that is well known across the breed
- Combines 73 WW with 120YW!
- Top dollar angus certified

BW: 96 WW: 682 YW: 1201 ADG Ratio: 89
 Dam's Nursing Ratio: 6/99 Dam's Age: 7
 1 Star Calving Ease

CED	BW	WW	YW	Milk	HPG	CEM	Stay	Marb	CW	REA	ProS	HB	GM
8	-2.6	73	120	27	13	7	14	-53	38	-17	141	74	67
94%	98%	8%	7%	33%	18%	54%	73%	22%	5%	32%	14%	60%	6%

Lot



Dahlke Box Cross 042H

23



BEST BOX CROSS 291
 SIRE: BEST BOX CROSS 820
 GALE 620 OF BEST ANGUS



LJC MISSION STATEMENT P27
 DAM: DAHLKE MS BIRDIE 218A
 DAHLKE MS BIRDIE 149W

Reg. #4370311
 042H/RAMS
 04-17-2020

- A low birthweight, heavy weaning weight option
- Sired by Best Box Cross 820, a bull that will keep cow size and input cost in check
- Dam is a 7 year old cow that has a wonderful friendly disposition
- 042H Pictured with dam pre-weaning
- Top dollar angus certified
- Black red carrier
- This bull is Black

BW: 81 WW: 756 YW: 1189
 Dam's Nursing Ratio: 6/102 Dam's Age: 7
 3 Star Calving Ease

CED	BW	WW	YW	Milk	HPG	CEM	Stay	Marb	CW	REA	ProS	HB	GM
15	-3.6	53	79	20	6	9	10	-28	38	-32	102	47	55
16%	17%	73%	82%	88%	99%	10%	95%	79%	4%	11%	73%	95%	18%

Dahlke Ms Hilton 102G

Lot
24



SIRE: BIEBER DEEP END B597
DAHLKE DEEP N WIDE 35E
DAHLKE MS TJ 207Z

DAM: MLK CRK REDSTONE
DAHLKE MS HILTON 263C
DAHLKE LOVE BIRD 200Y

- A true sale highlight. 102G is an own daughter of Dahlke Ms Hilton 263C, a cow we are very high on, that we have been flushing regularly
- We currently have 6 maternal sisters working in our herd, including the dam of lot 1 & 2
- A powerfully constructed female with extra gas and growth and an EPD profile that is hard to match
- Beautiful long front 1/3, correct made feet, an udder thats welded on snug, & an excellent disposition
- Top 1% growth numbers with carcass numbers and indces all in the top 11% of the breed
- Top Dollar Angus Certified
- Calved 2-25-21 with a AI sired Bull calf by Bieber Spartacus A193 that weighed 76#'s



CED	BW	WW	YW	Milk	HPG	CEM	Stay	Marb	CW	REA	ProS	HB	GM
10	1-0	83	134	31	15	6	18	-.61	49	-.48	172	100	72
84%	92%	1%	1%	6%	6%	65%	18%	11%	1%	3%	1%	9%	4%

BW: 89 WW: 704 YW: 1001
Dam's Nursing Ratio: 3/108 Dam's Age: 4
Calved 2-25-21 Bull Calf Tag# 122J Sired by Bieber Spartacus A193

Reg. #4133574
102G/BOLD
04-02-2019

Dahlke Ms Birdie 103G

Lot
25



SIRE: BIEBER DEEP END B597
DAHLKE DEEP N WIDE 35E
DAHLKE MS TJ 207Z

DAM: RED SIX MILE SAKIC 832S
DAHLKE MS BIRDIE 162X
DAHLKE MAKE MY BIRDIE 93T

- Here's a heifer with added frame size out of a solid 2010 model, Sakic sired cow, that had a lifetime wean ratio of 106
- A maternal sister to the lot 14 bull & our all time heaviest weaning weight bull, Dahlke Good Ol Boy 40E
- Top growth EPD's with added carcass merit
- Wonderful Disposition
- 103G will have her Atomic 85G sired calf on the ground by sale day
- Top Dollar Angus Certified



CED	BW	WW	YW	Milk	HPG	CEM	Stay	Marb	CW	REA	ProS	HB	GM
11	0-5	75	127	29	13	8	18	-.39	31	-.13	151	97	54
74%	88%	6%	3%	17%	19%	36%	16%	51%	14%	41%	7%	12%	19%

← Bieber Deep End - Grandsire of Lots 24 & 25

MARCH 28 • 2PM

BW: 84 WW: 530 YW: 868

Reg. #4133580
103G/BOLD
04-07-2019

WWW.DAHLKEREDANGUS.COM

Dam's Nursing Ratio: 9/106 Dam's Age: 10
Bred to Dahlke Atomic 85G (#4133630) Due 3-13-2021

Lot

26

Dahlke Ms Sandy 71G of 271C

SIRE: MILWILLAH FEVOLA F37
 MILWILLAH MARBLE BAR J53
 MILWILLAH LOWAN G291

DAM: DAHLKE MS SANDY 271C
 DAHLKE TRENDY SANDI 127U



- ET daughter sired by Marble Bar out of our 271C donor
- Deep bodied, easy fleshing maternal sister to the Lot 5 bull and a flush sister to our lots 1-4 last year
- Top 2% milk & CEM
- Good udder attachment, small teat size & calm disposition
- 71G Calved on 2-25 with a heifer calf AI sired by Bieber CL Atomic C218 that weighed 77#s
- Top Dollar Angus Certified

CED	BW	WW	YW	Milk	HPG	CEM	Stay	Marb	CW	REA	ProS	HB	GM
17	-1.6	61	105	33	7	11	15	.49	26	-.01	138	86	53
5%	53%	45%	28%	2%	97%	2%	58%	30%	27%	70%	16%	32%	21%

BW: 60 WW: 542 YW: 851
 Dam's Nursing Ratio: 4/101 Dam's Age: 5
 Calved 2-25-21 Heifer Calf Tag 123J Sired by Bieber CL Atomic C218

Reg. #4133600
 71G/BOLD
 02-25-2019

Lot

27



SIRE: ANDRAS FUSION R236
 BIEBER CL ATOMIC C218
 BIEBER DATELINE 308Y

DAM: BASIN HOBO 79E
 DAHLKE MS CARRIE 239B
 DAHLKE NORSE GIRL 213Z



- Maternal greats stacked on maternal greats, combining Atomic & Hobo 79E
- We have a few Atomic cows and there isn't one that I don't like
- 69G is a big footed heifer thats long spined, big middled and one that I think will end up being a very profitable cow
- Excellent EPD profile with calving ease, growth, maternal and carcass.
- Ranks in the top 2% for ProS, 4% GM
- Top Dollar Angus Certified
- AI bred to 5L Bourne 117-48A due March 4th

Bieber CL Atomic C218, Sire of
 lot 27 & service sire of lot 26 →

CED	BW	WW	YW	Milk	HPG	CEM	Stay	Marb	CW	REA	ProS	HB	GM
16	-3.8	63	116	28	9	10	17	.63	31	-.18	168	96	72
10%	15%	34%	10%	26%	80%	5%	22%	9%	13%	96%	2%	13%	4%

BW: 71 WW: 648 YW: 968
 Dam's Nursing Ratio: 5/100 Dam's Age: 6
 AI Bred to 5L Bourne 117-48A Due 3-4-2021

Reg. #4151812
 69G/TRED
 04-07-2019

Dahlke Ms Bourne Girl 70G

Lot
28



SIRE: 5L ADVANTAGE 3267-221Y
5L BOURNE 117-48A
5L ROXIE 854-117
DAM: DAHLKE BASIN HOBOS GIRL 226A
DAHLKE MN ROSIE 124U

- Dark red daughter sired by 5L Bourne out of the Rosie cow family that has been a mainstay here for many years
- After calving this heifer has displayed excellent maternal ability along with all the Bourne females
- Moderate framed & easy going
- 70G calved on 2-25 with a 86# bull calf AI sired by Andras Fusion

CED	BW	WW	YW	Milk	HPG	CEM	Stay	Marb	CW	REA	ProS	HB	GM
8	-1.1	67	99	29	17	3	18	.58	16	-.03	128	91	37
93%	63%	22%	41%	13%	2%	97%	14%	15%	64%	65%	30%	22%	53%

BW: 84 WW: 547 YW: 841
Dam's Nursing Ratio: 5/97 Dam's Age: 7
Calved 2-25-21 Bull Calf Tag 127J Sired by Andras Fusion R236

Reg. #4133636
70G/ARD
02-24-2019

Dahlke Ms Rosie 95G

Lot
29



SIRE: DAHLKE ENERGY 260C
DAHLKE SYNERGY 52E
DAHLKE MS LOVEBIRD 200Y

DAM: DAHLKE ROSIE 266C
DAHLKE MN ROSIE 124U

← 5L Topgun 560-65B,
AI service sire of Lot 29

- A moderate framed heifer that goes back to Andras Fusion twice
- Top 6% milk EPD
- Dark red, efficient made female
- Calved 2-22 with a 72# heifer calf AI sired by 5L Topgun, a breed leader for Heifer Fertility and foot quality

Reg. #4133628
95G/ARD
03-24-2019

CED	BW	WW	YW	Milk	HPG	CEM	Stay	Marb	CW	REA	ProS	HB	GM
11	-1.5	43	69	31	9	7	16	.42	15	-.09	109	69	40
75%	55%	93%	91%	6%	84%	42%	42%	44%	68%	88%	62%	71%	46%

BW: 67 WW: 502 YW: 758
Dam's Nursing Ratio: 3/101 Dam's Age: 5
Calved 2-22-21 Heifer Calf Tag 114J Sired by 5L Topgun

Dahlke Ms Sandi 63G

Lot
30

SIRE: DAHLKE ENERGY 260C
DAHLKE SYNERGY 52E
DAHLKE MS LOVEBIRD 200Y

DAM: BERGREN SANDI 601
JACOBSON SANDI 4195

- Granddaughter of 5L MTN Sign 435-10Z
- A little larger framed heifer
- Expect good feet and udder on this girl
- Excellent disposition
- Due to calve 3-31 to Dahlke Marble 78G, so its possible she could have her calf at side by sale day
- Top Dollar Angus Qualified

Reg. #4130948
63G/GDRA
04-02-2019



CED	BW	WW	YW	Milk	HPG	CEM	Stay	Marb	CW	REA	ProS	HB	GM
13	-2.5	52	86	29	11	8	14	.53	25	-.03	125	67	58
43%	35%	77%	70%	19%	59%	28%	68%	22%	29%	78%	35%	74%	14%

BW: 66 WW: 581 YW: 799
Dam's Nursing Ratio: 3/98 Dam's Age: 4
Bred to Dahlke Marble 78G Due 3-31-2021

Dahlke females sold in past sales

Hilcom Cow Family



Birdie Cow Family



Birdie Cow Family



Birdie Cow Family



Hilcom Cow Family



Birdie Cow Family



Sandy Cow Family



Sandy Cow Family



Ask us about embryos available for purchase

RED ANGUS FCCP MARKETING PROGRAMS

The Red Angus Feeder Calf Certification Program is the first step in differentiating your cattle to buyers, feedlots and packers.

Experience industry-leading return on investment for just the cost of an ear tag – with no enrollment fees.

The Red Angus Association of America Marketing Team offers assistance to Red Angus bull customers at no charge.



Feeder Calf Certification Program



- Traceability to at least 50% Red Angus genetics
- Source verified to ranch of origin
- Group age verified

Eligible for Choice+ and G.O. Red Grids
No enrollment fee, 99¢/tag
840-compliant EIDs available upon request

**GENETICS
SOURCE • AGE**

RED ANGUS
RANCH TESTED. RANCHER TRUSTED.
RedAngus.org • (940) 226-4762

Top Dollar Angus Feeder Calf Program



Promote Your Verified Genetic Investment

Top Dollar Angus is the industry leader in third-party genetic verification and marketing assistance for superior Angus and Red Angus-based feeder cattle. Our program stamps a unique identity on the 'best of the best' by verifying and then showcasing their genetic merit. The Top Dollar Angus team works directly with a large number of feedyards and buyers to provide them with documented superior

feeder cattle, coupled with genetic risk mitigation and the precision understanding they need to pursue your cattle with absolute confidence.

Top Dollar Angus enables cow-calf producers to benefit from the genetic value already built into their herds. Producers that invest in high-end genetics, as well as strong health and nutrition programs, need a means of positively differentiating their calves from average cattle. Top Dollar Angus does that. Industry demand is strong for genetically superior feeder calves with the right supporting documentation. Don't make buyers guess, let them know by putting the Top Dollar Angus badge of honor on your premium genetic investment.



Contact our team for more information and a free evaluation:



www.topdollarangus.com

Nate Smith, General Manager • (620) 546-4839 • nate@topdollarangus.com

Kacey Jacobson • (701) 391-4646 • kacey@topdollarangus.com

Jake Feddes • (406) 581-8157 • jake@topdollarangus.com

Adam Menker • (419) 310-5344 • adam@topdollarangus.com

Jason Gagnon • (559) 723-6362 • jason@topdollarangus.com

Andy Albrecht • (402) 922-1000 • andy@topdollarangus.com

Top Bulls for each EPD

ProS

009H -1%
016H -1%
015H -1%
044H -1%
013H -1%
70H -1%

CED

016H -1%
70H -1%
036H -3%
67H -8%
042H -16%
69H -16%

Milk

004H -4%
009H -8%
048H -9%
013H -12%
007H -12%
032H -14%

Marb

009H -1%
67H -3%
032H -4%
044H -4%
014H -5%
013H -7%

009H - Lot 1
035H - Lot 2
004H - Lot 3
036H - Lot 4
016H - Lot 5
70H - Lot 6
69H - Lot 7
002H - Lot 8
015H - Lot 9
019H - Lot 10
67H - Lot 11
68H - Lot 12
021H - Lot 13
022H - Lot 14
031H - Lot 15
007H - Lot 16
013H - Lot 17
014H - Lot 18
048H - Lot 19
032H - Lot 20
044H - Lot 21
041H - Lot 22
042H - Lot 23

HB

70H -1%
044H -2%
016H -3%
032H -8%
015H -10%

WW

015H -2%
035H -3%
009H -4%
019H -7%
041H -8%
022H -12%

HPG

009H -1%
035H -1%
004H -1%
69H -3%
015H -5%
70H -5%
002H -8%
036H -9%
019H -10%

REA

035H -7%
015H -7%
019H -7%
042H -11%
048H -14%
016H -18%

GM

009H -1%
015H -1%
013H -3%
044H -5%
035H -6%
041H -6%

YW

015H -2%
035H -3%
009H -5%
041H -7%
019H -8%
048H -16%
022H -18%

Stay

044H -1%
70H -2%
032H -3%
68H -5%
002H -15%

CW

035H -1%
015H -1%
019H -1%
009H -2%
042H -4%
041H -5%
013H -10%
002H -10%

RED ANGUS GUIDE TO EPDS

RedAngus.org

ProS..... Profitability and Sustainability is an all-purpose index that predicts average economic differences in all segments in the beef supply chain. This index is a combination of the breeding objectives modeled in the HerdBuilder and GridMaster selection indexes. In this index, replacement heifers are retained from within the herd and all remaining progeny are fed out to slaughter and sold on a quality-based grid. Traits included in this index include calving ease, growth, HPG, STAY, Mature Weight, Dry Matter Intake and carcass traits. The resulting index is expressed in dollars per head born (Index/High Value).

HB..... HerdBuilder is a maternal selection index that predicts the economic differences of animals for traits that are important from conception through weaning. Expressed as dollars per head born, HB is calculated based on the scenario that bulls are mated to heifers and cows, replacement heifers are retained and all remaining progeny are marketed at weaning. Traits included in the HB index include Calving Ease Direct, Calving Ease Maternal, Weaning Weight, Milk, Mature Weight, Heifer Pregnancy and Stayability (Index/High Value).

GM..... GridMaster is a selection index that predicts the average economic difference of non-replacement calves through the post-weaning phase of production. GM places selection pressure on growth, feedyard performance and carcass traits. Expressed as dollars per head born, GM is calculated based on the scenario that progeny are fed out to slaughter and marketed on a quality-based carcass grid. Traits included in GM include Average Daily Gain, Carcass Weight, Dry Matter Intake, Marbling, Back Fat and Rib Eye Area (Index/High Value).

CED..... Calving Ease Direct predicts differences in the percent of calves born unassisted out of 2-year-old dams. (Percent/High Value)

BW..... Birth Weight predicts differences in actual birth weight of progeny. (Pounds/Low Value)

WW..... Weaning Weight predicts differences in 205-day weaning weight. (Pounds/High Value)

YW..... Yearling Weight predicts differences in 365-day yearling weight. (Pounds/High Value)

ADG..... Average Daily Gain predicts differences in weight gain between 205 and 365 days of age. (Pounds/High Value)

DMI..... Dry Matter Intake predicts differences in daily feed intake as measured in a feedlot during the post-weaning period. (Pounds/Low Value)

MILK..... Milk predicts differences in weaning weight attributed to the milking ability of the animal's daughters. (Pounds/High Value)

ME..... Maintenance Energy predicts the difference in maintenance energy requirements. (Mcal per Month/Low Value)

HPG..... Heifer Pregnancy predicts differences in the percent of daughters who are able to conceive and calve at 2 years of age following exposure to breeding. (Percent/High Value)

CEM..... Calving Ease Maternal predicts differences in the percent of daughters who are able to calve unassisted as 2-year-old heifers. (Percent/High Value)

STAY..... Stayability predicts differences in the ability of an animals' retained daughters to remain productive in the herd – calve every year – through 6 years of age. (Percent/High Value)

MARB..... Marbling predicts differences in marbling score – amount of intramuscular fat measured at the 13th rib. (Marbling Score Units/High Value)

YG..... Yield Grade predicts differences in USDA Yield Grade, which is calculated using CW, REA and Fat. (Yield Grade Units/Low Value)

CW..... Carcass Weight predicts differences in actual hot carcass weight. (Pounds/High Value)

REA..... Ribeye Area predicts differences in square inches of ribeye area measured at the 13th rib. (Square Inches/High Value)

FAT..... Fat predicts differences in the depth of backfat measured between the 12th and 13th ribs. (Inches/Low Value)

Dahlke Red Angus
19505 400th street
Bagley, MN 56621



Dahlke Bulls are Maternal Bulls



Dahlke Red Angus

Where the cow behind the bull is just as important as the bull himself.

*Please Remember to bring your
catalog on sale day!*